

PRODUCT SPECIFICATION

MODEL : T150

CUSTOMER : HYOSUNG

CHECKED					APPROVED

SUPPLIER : T1K Co., Ltd

DESIGN	CHECKED				APPROVED



TAIYI Technology Co., Ltd.

Manufacturing
Plant A, First Floor, No.33, Yingshan Road, Luo Cun Development
Zone, Lilin Town, Zhong Kai Gao Xin Qu
Huizhou Guangdong China

REVISION HISTORY

<i>Version</i>	<i>Date</i>	<i>Change Description</i>
<i>1.0</i>	<i>May 07, 2018</i>	<i>First release</i>

이 문서는 (주)태억테크놀로지의 소유물로서 저작권법에 따라 보호받고 있다.

따라서 (주)태억테크놀로지의 허가 없이는 무단 전제나

복사, 그리고 사외로 배포할 수 없다.

This document is confidential to TAIYI Technology Co., Ltd.

The Information contained herein is not to be distributed, revealed or disseminated within or outside the company to any other party other than TAIYI without the prior expressed consent and written permission of TAIYI.

TABLE OF CONTENTS

1. INTRODUCTION	4
2. TOUCH SPECIFICATIONS	5
2.1. GENERAL SPECIFICATIONS	5
2.2. MECHANICAL SPECIFICATIONS	5
2.3. ELECTRICAL SPECIFICATIONS	6
3. RELIABILITY	6
4. SOFTWARE SPECIFICATIONS	7
5. INTERFACE SPECIFICATIONS	8
5.1. CONNECTOR1	8
5.2. CONNECTOR2	8
5.3. APPEARANCE	9
6. MECHANICAL DIMENSIONS	10
6.1. APPEARANCE.....	10
7. PACKING SPECIFICATIONS	11
8. PRODUCTION IDENTIFICATION STICKER	12
9.HANDLING PRECAUTIONS	13
9.1. STORAGE	13
9.2. HANDLING	13

*APPENDIX *Touch compatible with Below OS*

1. INTRODUCTION

Features :

- ✓ Smart and easy assembly
- ✓ Ultra-low power consumption , Adaptor-free
- ✓ A plug-and-play device
 - : Windows 8/7,XP、 Android、 Linux、 Mac、 Chrome
- ✓ Support four, six and ten touch points. (Option)
- ✓ Strong light resistance, work in severe environment
- ✓ Application
 - : Interactive Flat Panel, Kiosk, Digital Signage

2. TOUCH SPECIFICATIONS

2.1 GENERAL SPECIFICATIONS

Item	Description		Remarks
Size	15.1 inch		
Detection Method	Infrared rays		
Touch Interpolation	32768(W)× 32768(D)		
Response Time	< 9 ms		
Touch Accuracy	±2 mm (Over 90% area)		
Touch Input Method	Finger, Finger of gloved hand, Opaque objects		
Output Form	Coordinate Value		
Latency	9 ms		Continuous
Optics Cell Pitch	6 mm		
Optics Number	51(H) x 38(V)		
Available Object Size for Touch	Single	6 mm	
	Multi	8 mm	
Agency Approval	T.B.D		CE, FCC

2.2 MECHANICAL SPECIFICATIONS

Item	Description		Remarks
Housing Cover	Polycarbonate		
Housing Bottom	Stainless steel		
Out-dimension	342.6 (H) x 267 (V) ±1.0 mm		
Active Area	305.7 (H) x 229.7 (V) mm		Panel Company
Thickness	7.3 ± 0.5mm		Housing
Glass	3.0mm thickness tempered glass		
Weight	Net	0.715 kg	
	Gross	8.6 kg	With USB Cable

2.3 ELECTRICAL SPECIFICATIONS

Item	Description	Remarks
Interface	B-Type USB/Harness	
Scan Periods	110 Hz	
Frame Rate	110 Hz	
Communication	USB 2.0 Full Speed	
Transmission Rate	12 Mbps	
Operating Voltage	DC 5V \pm 5%	
Power Supply Mode	USB	
Average Current	150 mA \pm 10%	
Power Consumption(Active)	0.8W \pm 10%	DC 5.1V/150mA
How to supply it	From PS-2 port of PC or external power	

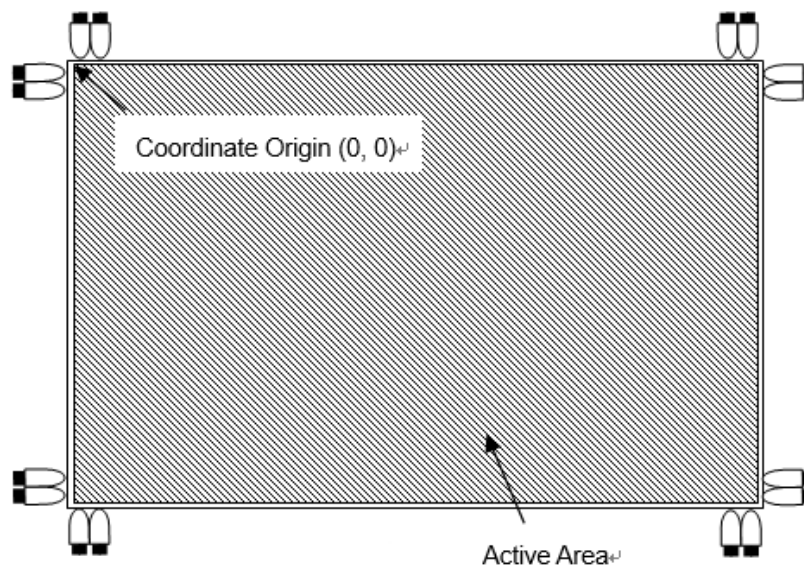
3. RELIABILITY

Item	Specification	Remarks
Ambient Temperature	Operating	0°C to 55°C, 6Hrs \uparrow
		55°C 30% RH, 8Hrs \uparrow
	Storage	0°C to 55°C, 8Hrs \uparrow
Humidity	Operating	35°C 90% RH, 8Hrs \uparrow
Ball Drop	500g steel ball / 130cm Floor material : Double supported steel beam	The glass should not break.
ESD	Contact	\pm 4kV
	Air	\pm 8kV
Ambient Light		> 70,000 Lux
		200W, H=1cm
Warranty	1 year	

4. SOFTWARE SPECIFICATIONS

Item	Description
Firmware Upgrade	USB Upgrade: Windows system
Multi Touch	Windows 7 Ultimate, Windows 7 Professional, Windows 7 Home Premium, Android (need patch in kernel code), Windows 8/8.1, Windows 8 Pro, Windows 8 Enterprise, Windows 10 * Performance will be impacted if mentioned systems do not support multi-touch function or have no copyrights. And Windows 8 must be non OEM version.
Single Touch	Windows 2000, Windows XP, Vista, Linux, Mac, Android, and WinCE and Chrome
Scanning Form	Auto start , Always scan
Movement Mode	Input point, Finishing point, Following, Continuous detection
Controllerreported resolution	32768(X) x 32768(Y)
Output form	Coordinate Output
Firmware version	to be confirmed (Update After Confirmed)

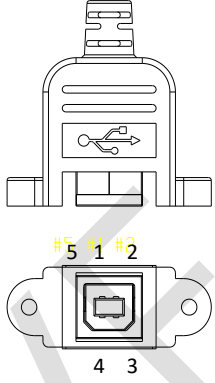
*** Panel Active Area and Detection coordinate**



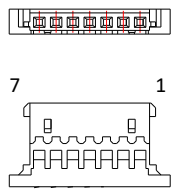
[Fig] Panel Information

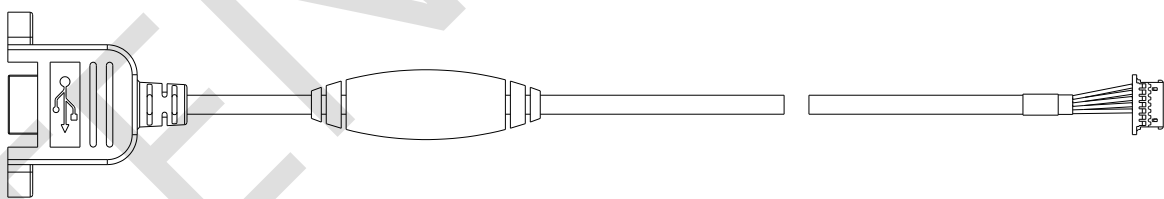
5. INTERFACE SPECIFICATIONS

5.1 Connector1

Pin No	Definition	Description	
1	GROUND	GND	
2	DATA+	D+	
3	DATA-	D-	
4	VCC(+5V)	VCC	
5	GROUND	GND	

5.2 Connector2

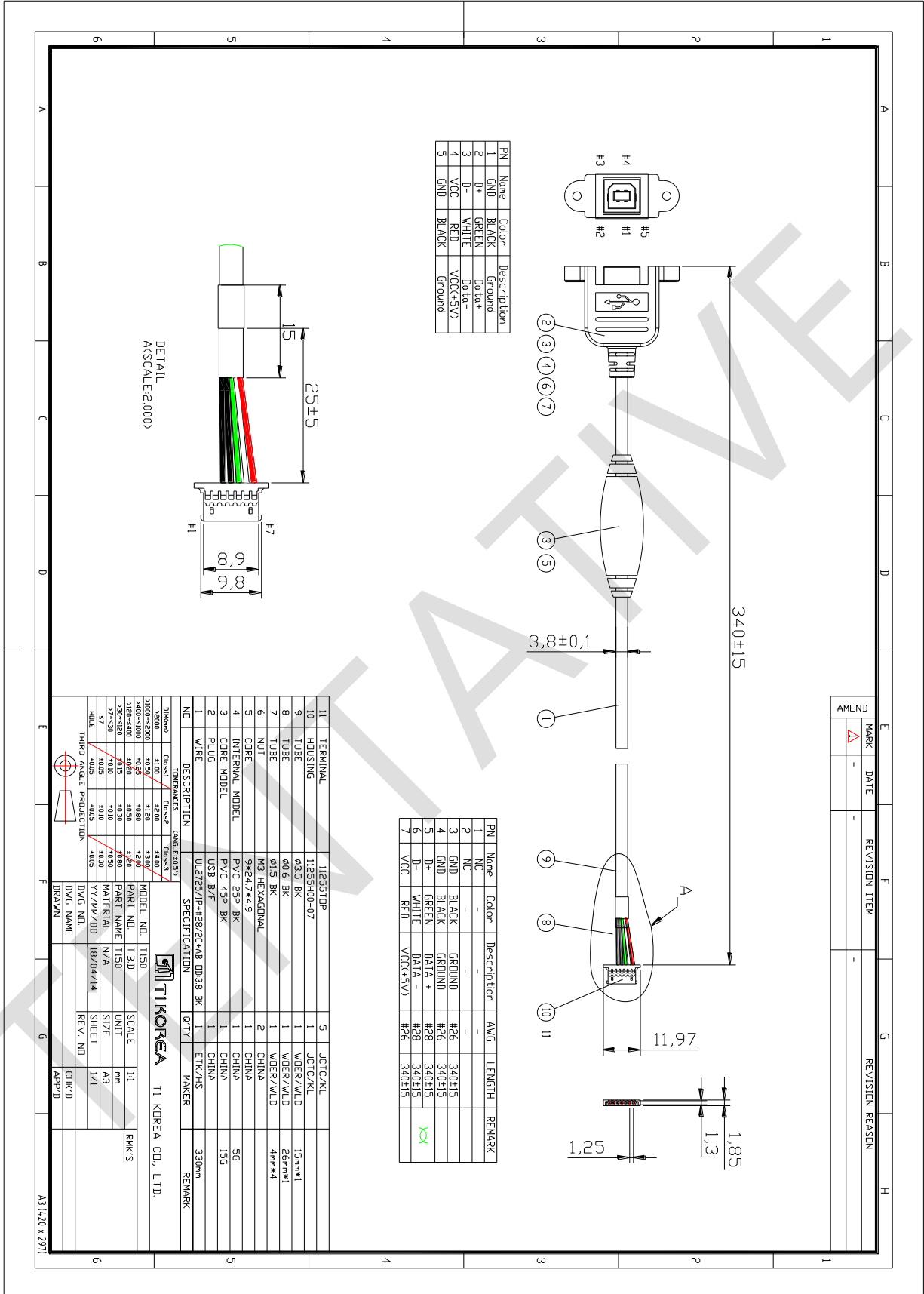
Pin No	Definition	Description	
1	VCC(+5V)	VCC	
2	DATA-	D-	
3	DATA+	D+	
4	GROUND	GND	
5	GROUND	GND	
6	NC		
7	NC		



[Fig] USB Cable

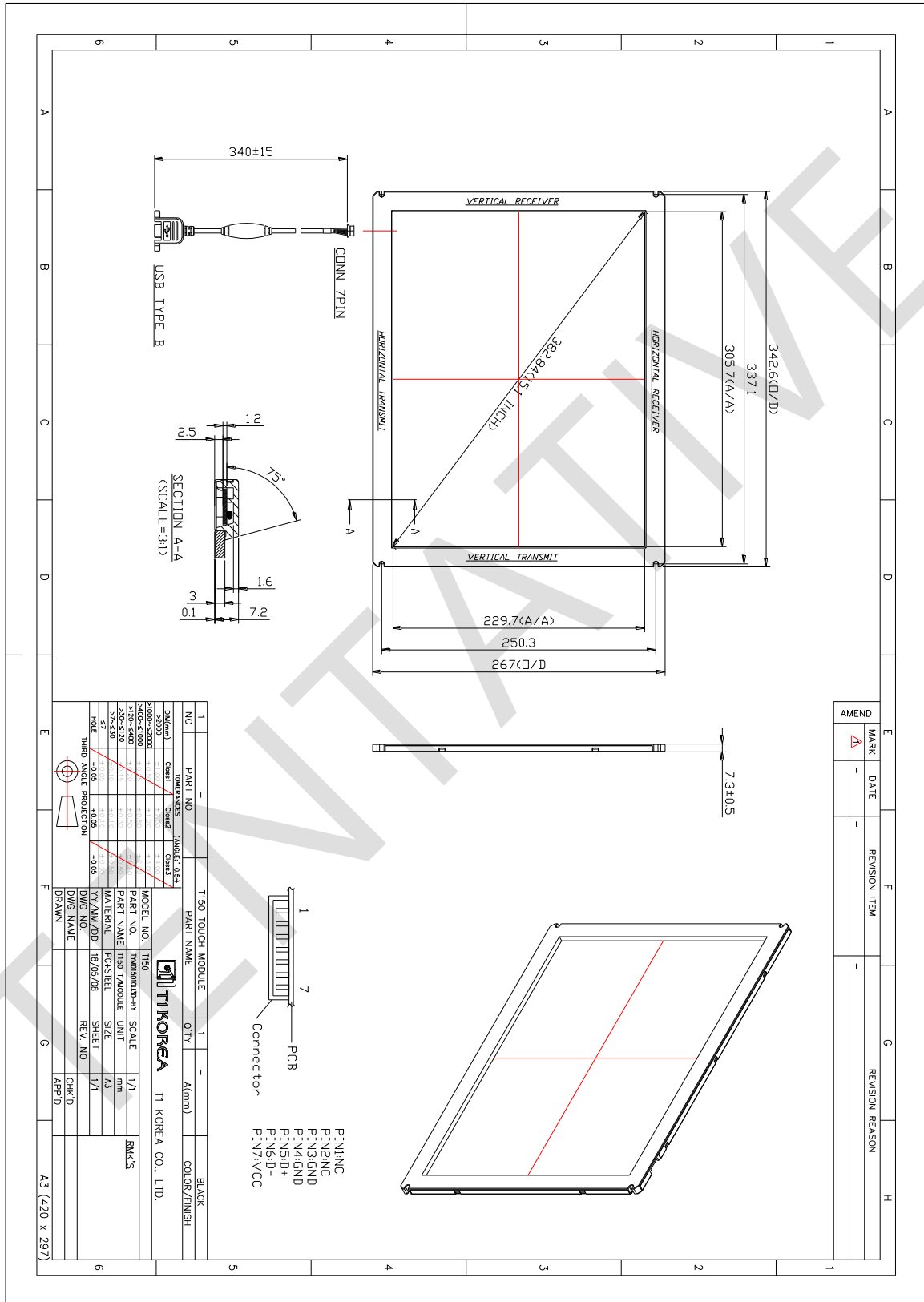
Item	Description
Hexagonal Stud Length	6mm±0.3mm
Cable length	340mm ± 15
Cable information:	UL2725/1P+#28/2C+AB OD:3.8 BK

5.3 Appearance



6. MECHANICAL DIMENSIONS

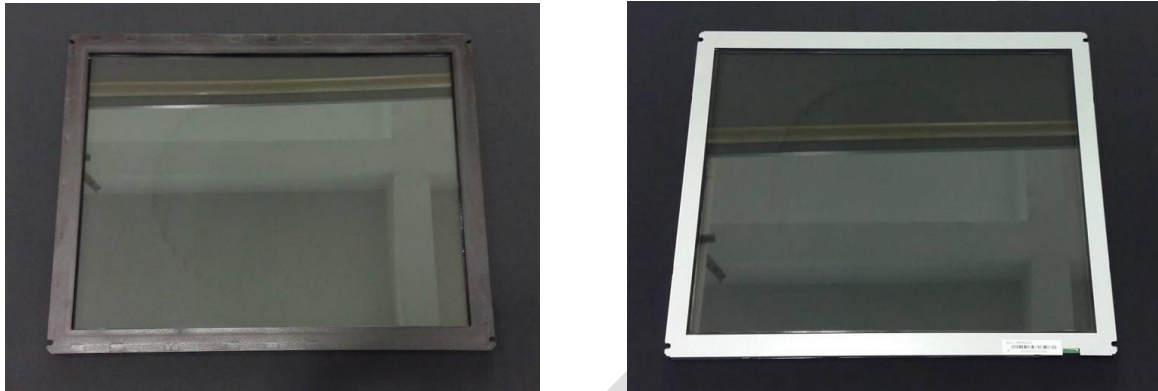
6.1 APPEARANCE



7. PACKING SPECIFICATIONS

7.1 PRODUCT

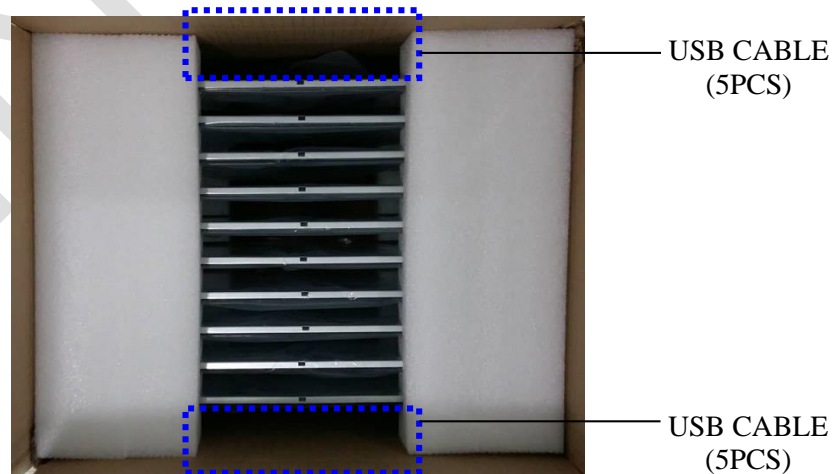
Item	Size (mm)	Net Weight (g)
Touch Modul	342.6(W) x 267(D) x 7.3(T)	715
USB Cable	340	28.5



[Fig] Front(L) & Rear(R) View

7.2 PACKING

Item	Size (mm)	Gross Weight (kg)
1 BOX	440(W) x 360(D) x 360(T)	8.6



[Fig] 10 PCS packing

8. PRODUCTION IDENTIFICATION STICKER

8.1 Production has serial number stickers.

18 15 M 0150 HY X C 0001

1~2 3~4 5 6~9 10~11 12 13 14~17

Digit No	Information	Remark
1~2	Product date	18(2018 years)
3~4	Week Numbers	15(Week 15)
5	Product series	M (Touch module)
6~9	Inch	0150 (15inch)
10~11	Customer	HY(HYOSUNG)
12	Special note	X(Nothing special)
13	Production site	C(China)
14~17	Serial number	0001(1st Product of the week)

8.2 PCBA has serial number stickers.

TSD-T201-H15.1-20180401-01446

1~3 4 5~8 9 10~14 15 16~23 24 25~29

Digit No	Information	Remark
1~3	Corporate	TSD
4	mark of division	Dash(-)
5~8	Schemes	T201 (Touch Screen Project Design)
9	mark of division	Dash(-)
10~14	PCB Series&Touch Screen	H:H-Series 15.1 : 15.1 inch
15	mark of division	Dash(-)
16~23	Product Date	20180401(May 01,2018)
24	mark of division	Dash(-)
25~29	Product Number	01446(01446th)

9. HANDLING PRECAUTIONS

➤ .STORAGE

- Do not leave the Module in high temperature, and high humidity for a long time. It is highly recommended to store the Module with temperature from 0 to 35°C and relative humidity of less than 70%.
- Protect from static electricity and dust.

➤ HANDLING

- Be careful not to twist and bend the touch panel.
- No strong shock such as a drop shall not be applied when handling.
- Operating area, fixtures, tools and all related facility shall be earthed.
- Refrain from strong mechanical shock and / or any force to the touch panel.
In addition to damage, this may cause improper operation or damage to the touch panel.
- Wipe off water droplets or oil immediately. If you leave the droplets for a long time, staining or discoloration may occur.
- Desirable cleaners are water or Alcohol.
Do not use Acetone, Caustic soda, Amine, Ammonia, Strong acid, Ethyl alcohol, Pyridine, Acetone, Benzene, Ester or Methyl chloride.
- Do not spray Cleaners to the device directly, sprayed on a soft cloth and use it.
- Surely turn the power off before clean the device

10. RoHS COMPLIANCE

T150 IS RoHS compliance.

Touch compatible with Below OS



OS	Windows						
Sub-OS	Windows 2000	Windows XP	Windows Vista	Windows 7	Windows 8/8.1	Windows 10	Windows CE 6.0
Support?	√	√	√	√	√	√	√
Multi-touch	single	single	single	√	√	√	single
Driver	HID compliance ,not need any driver						Need driver
Notice:	Performance will be impacted if mentioned systems do not support multi-touch function or have no copyrights. And Windows 8 must be non OEM version						



OS	Linux			
Sub-OS	Fedora10+ or above	Ubuntu10.04+ or above	RedFlag 6.2 + or above	OpenSuse 11.4 + or above
Support?	√	√	√	√
Multi-touch	· kernel version 3.0+ ,can support multi-touch by adding patch · kernel version 3.5+ , HID compliance support multi-touch			
Driver	HID compliance.			



OS	Mac OS X	
Sub-OS	10.9 or lower	10.10 or above
Support?	√	√
Driver	Supported by UPDD driver	
Notice:	HID compliance support single touch Multi-touch supported by UPDD driver	



OS	Android				
Sub-OS	2.1	2.2	2.3	3	4.0/4.1/4.2/4.3/4.4
Support?	N/A	√	√	N/A	√
Driver	HID compliance.				
Multi-touch	·kernel version 2.6.32+ , we can provide patch Kernal version 3.5+ , HID copliance support Multi-touch				



OS	Chrome
Sub-OS	39 or above
Support?	√
Driver	HID compliance.

Notice: if your OS version is not above mentioned ,pls contact us